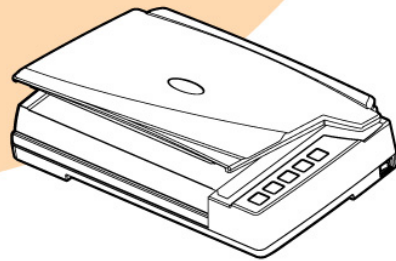


# Scanner User's Guide

**plustek**



**OpticBook** A300

- ✓ Installation
- ✓ Usage & Maintenance

## **Trademarks**

© 2008 Plustek Inc. All rights are reserved. No portion of this document may be reproduced without permission.

All trademarks and brand names mentioned in this publication are property of their respective owners.

## **Liability**

While all efforts have been made to ensure the accuracy of all contents in this manual, we assume no liability for errors or omissions or by statements of any kind in this manual, whether such errors are omissions or statements resulting from negligence, accidents, or any other cause. The contents of this manual are subject to change without notice.

## **Copyright**

The scanning of certain documents, for example checks, bank notes, I.D. cards, government bonds, or public documents, may be prohibited by law and/or subject to criminal prosecution. We recommend you to be responsible and respectful of the copyrights laws when you are scanning books, magazines, journals and other materials.

## **Environmental Information**

The product is designed and produced to achieve sustainable environmental improvement. We strive to produce products in compliance with global environmental standards. Please consult your local authorities for proper disposal.

The product packaging is recyclable.

Attention for recycling (For EU country only)

Protect your environment! This product should not be thrown into the household waste container. Please give it to the free collecting center in your community.

## **Screen Examples in This Manual**

The screen shots in this guide were made with Windows XP. If you are using Windows 2000 or Vista, your screen will look somewhat different but functions the same.

# Table of Contents

<b>INTRODUCTION</b> .....	<b>1</b>
How to Use This Guide.....	1
Conventions of This Guide .....	1
<i>A Note about Icons</i> .....	2
Safety Precautions.....	2
Minimum System Requirements.....	3
Box Contents .....	4
The Scanner Features.....	5
<b>CHAPTER I. INSTALLING THE SCANNER</b> .....	<b>7</b>
Software Installation Requirements .....	7
Hardware Requirements.....	7
Installing and Setting up the Scanner.....	8
<i>Step 1. Unlock Your Scanner</i> .....	8
<i>Step 2. Connecting the Scanner to Your Computer</i> .....	9
<i>Step 3. Installing the Software</i> .....	9
<i>Step 4. Testing the Scanner</i> .....	11
Installing Additional Software.....	12
<b>CHAPTER II. SCANNING</b> .....	<b>13</b>
Placing the image(s).....	13
<i>Using the Flatbed</i> .....	13
Scanning the image(s).....	14
<i>Scanning via TWAIN Interface</i> .....	15
<i>Scanning from the scanner's panel or via Book Pavilion Interface</i> .....	17
<b>CHAPTER III. CARE AND MAINTENANCE</b> .....	<b>19</b>
Cleaning the Scanner.....	19
<i>Cleaning Materials</i> .....	19
<i>Cleaning the Flatbed</i> .....	19
Aligning the Scanner.....	20
Power Save .....	21
Scanner Lock.....	22
<b>CHAPTER IV. TROUBLESHOOTING</b> .....	<b>24</b>
Scanner Connection .....	24
<b>APPENDIX A: SPECIFICATIONS</b> .....	<b>25</b>
<b>APPENDIX B: CUSTOMER SERVICE AND WARRANTY</b> .....	<b>26</b>
Statement of Limited Warranty .....	26
FCC Radio Frequency Statement.....	27
<b>CONTACTING PLUSTEK</b> .....	<b>29</b>

# INTRODUCTION

Thank you for choosing us as your scanner supplier. Your new scanner will improve the professionalism of your day-to-day computing tasks by allowing you to input images and electronic text into your computer system.

Like all of our products, your new scanner is thoroughly tested and backed by our reputation for unsurpassed dependability and customer satisfaction. We hope you will continue to turn to us for additional quality products as your computing needs and interests grow.

## HOW TO USE THIS GUIDE

This User's Guide provides instructions and illustrations on how to install and operate your scanner. This guide assumes the user is familiar with Microsoft Windows Vista, XP or 2000 Professional. If this is not the case, we suggest you learn more about Microsoft Windows by referring to your Microsoft Windows manual before using your scanner.

The Introduction section of this manual describes the box contents and minimum computer requirements to use this scanner. Before you start installing your scanner, check the box contents to make sure all parts are included. If any items are damaged or missing, please contact the vendor where you purchased your scanner or our customer service directly.

Chapter I describes how to install the scanner's software and connect the scanner to your computer. Note: The scanner connects to your computer through the Universal Serial Bus (USB). If your computer does not support USB technology, you will need to purchase a USB interface card to add USB capabilities to your computer, or buy and install USB connectors if your motherboard has USB capabilities. This guide assumes that your computer is USB-ready and has a free USB port.

Chapter II describes how to use your scanner.

Chapter III describes how to maintain and clean your scanner.

Chapter IV contains technical support information that can help you solve simple problems.

Appendix A contains the specifications of the scanner you purchased.

Appendix B contains our customer service, the limited warranty agreement and FCC statement concerning the product.

## CONVENTIONS OF THIS GUIDE

"XXX" — Represents commands or contents on your computer screen.

**Bold** — Represents buttons on your scanner OR important notes.

ALL CAPS — Important note or first use of an important term in a chapter.

## A Note about Icons

This guide uses the following icons to point out information that deserves special attention.



**Warning**

A procedure that must be followed carefully to prevent injury, or accidents.



**Attention**

Instructions that are important to remember and may prevent mistakes.



**Information**

Optional tips for your reference.

## SAFETY PRECAUTIONS



**Warning**

Before using this device, please read the following important information to eliminate or reduce any possibility of causing damage and personal injury.

1. Moisture condensation may occur inside this device and cause malfunction at these conditions:
  - when this device is moved directly from a cold to a warm location;
  - after a cold room is heated;
  - when this device is placed in a damp room.

To avoid the moisture condensation, you are recommended to follow the procedure:

- i. Seal this device in a plastic bag for it to adapt to room conditions.
- ii. Wait for 1-2 hours before removing this device from the bag.

2. Do use the AC adapter, power cable and USB cable provided with the scanner. Use of other AC adapter and cables may lead to malfunction.
3. Keep the space around the AC adapter and power cable clear in case you need to quickly unplug the AC adapter during emergencies.
4. Damaged wire could cause fire or electrical shock. Keep the power cord straight and without being twisted, bended, or scraped.
5. Unplug this device if you don't need to use it for a certain period of time, such as, during night or long weekend, to avoid any risks of causing fire.
6. Do not attempt to disassemble the scanner. There is danger of an electrical shock and opening your scanner will void your warranty.
7. Be sure not to bump or knock the scanner glass as it is fragile and could break.
8. Do not subject the scanner to excessive vibration. It may damage the internal components.

## MINIMUM SYSTEM REQUIREMENTS<sup>1</sup>

- PC with Intel Pentium® IV 2.0 GHz processor or compatible
- 512 MB RAM
- Available USB 2.0 port
- CD-ROM Drive or DVD-ROM Drive
- 800 MB Free Hard Disk Space
- Video card that supports 16-bit color or greater
- Operating System: Windows 2000 Professional, Windows XP Home Edition, Windows XP Professional, or Windows Vista



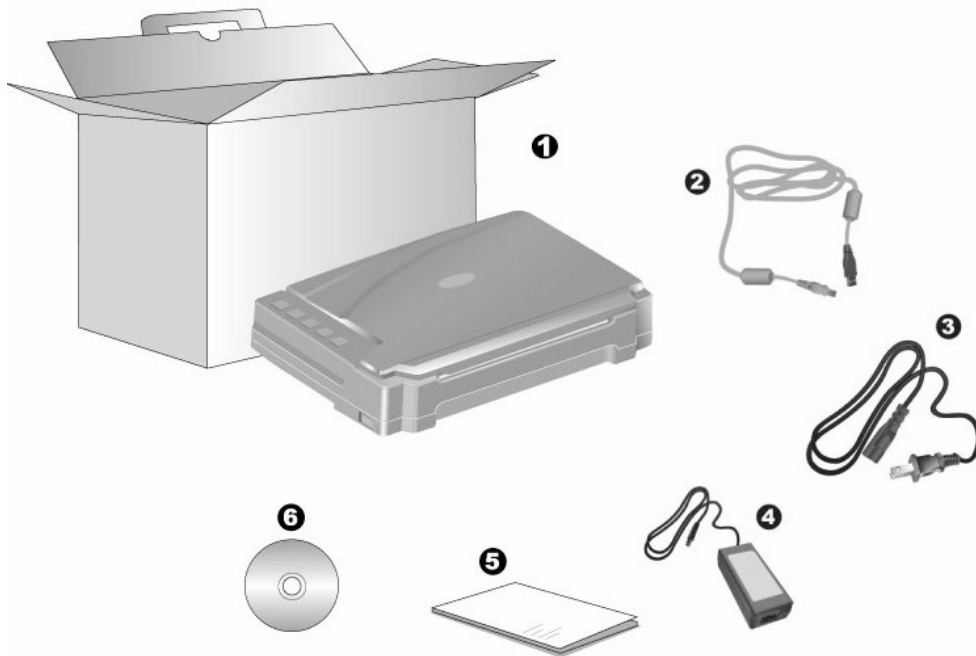
### Information

Systems with Pentium® IV 3.0 GHz or higher processor (or its compatible), 1GB RAM and 1GB free hard disk space are recommended for optimal performance.

---

<sup>1</sup> Higher requirements might be needed when scanning or editing a large quantity of image data. The system requirements here are only a guideline, as in general the better the computer (motherboard, processor, hard disk, RAM, video graphic card), the better the results.

## BOX CONTENTS<sup>2</sup>



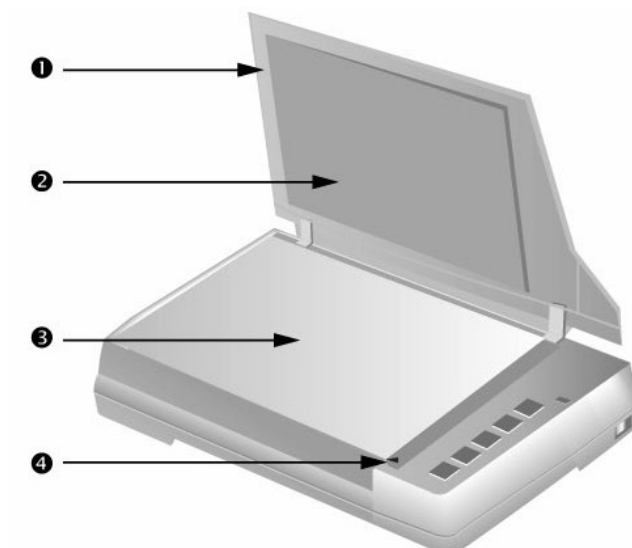
1. Scanner<sup>3</sup>
2. USB Cable
3. Power Cable
4. AC Adapter
5. Quick Guide
6. Setup/Application CD-ROM

---

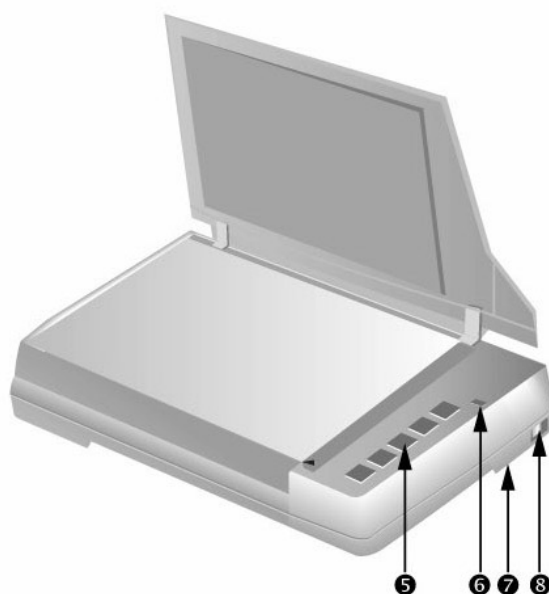
<sup>2</sup> Save the box and packing materials in case you need to transport this scanner in the future.

<sup>3</sup> The scanner illustration(s) in this manual may appear different than from the actual scanner itself.

## THE SCANNER FEATURES



1. DOCUMENT COVER— Helps keep the book or paper in place and protects the scanner glass.
2. DOCUMENT PAD— Keeps the book or paper in place and improves accuracy of image quality.
3. SCANNER GLASS— Where you put items for flatbed scanning.
4. REFERENCE MARK— Align your book or paper with this reference mark for flatbed scanning.

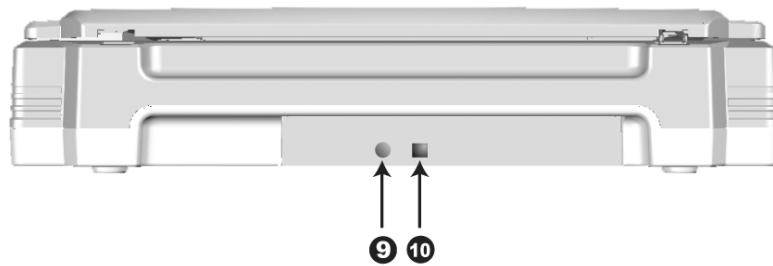




5. **SCANNER BUTTONS**—You may press any button to perform a predefined scanning task.
6. **POWER LED**— Indicates the scanner status.

Light	Status
On	The scanner is turned on, ready to scan images.
Off	The scanner is off, either because the power is not turned on, or because the power cord is not properly plugged into an AC power outlet.

7. **SCANNER LOCK** (located on the scanner's underside)— Holds your scanner head in place during transportation.
8. **POWER SWITCH**— Use this to turn the scanner ON or OFF.



9. **POWER RECEPTOR**— Connects the scanner to a standard AC power outlet by the AC adapter included.
10. **USB PORT**— Connects the scanner to a USB port on your computer by the USB cable included.

# CHAPTER I. INSTALLING THE SCANNER

Before installing your scanner, please verify that you have all of the proper components. A list of the package contents is provided in the “Box Contents” section of this guide.

## SOFTWARE INSTALLATION REQUIREMENTS

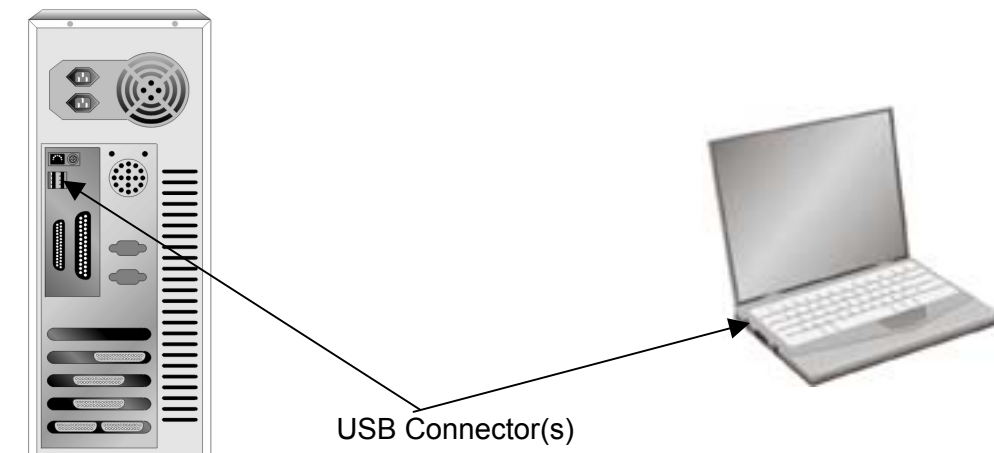
Your scanner comes with the image-editing software (NewSoft Presto! ImageFolio), OCR software (I.R.I.S. Readiris Pro 10 Corporate Edition), the document management software (NewSoft Presto! PageManager), Adobe Reader, the scanner’s driver and the Book Pavilion software. All of these software applications use approximately 800 megabytes of hard disk space after they are installed into your computer. To ensure ample room for the installation, as well as for scanning and saving images, a minimum of 1 GB of hard disk space is recommended.

The USB scanner can only operate under the Microsoft Windows 2000 Professional, XP or Vista operating system.

## HARDWARE REQUIREMENTS

This scanner connects to your computer through the Universal Serial Bus (USB) which supports HOT PLUG AND PLAY. To determine whether your computer is USB-capable, you must check the rear of your PC to locate a USB jack that looks like the picture below. If you are having trouble in locating the USB port on your computer, please refer to the hardware manual that came with your computer.


Upon examination, you should find one or two rectangular USB ports, which usually appear as shown below.



If you don't find such USB ports on your computer, then you need to purchase a certified USB interface card to add USB capabilities to your computer.

# INSTALLING AND SETTING UP THE SCANNER

Please follow the step-by-step procedures described below to install the Plustek scanner.



### Attention

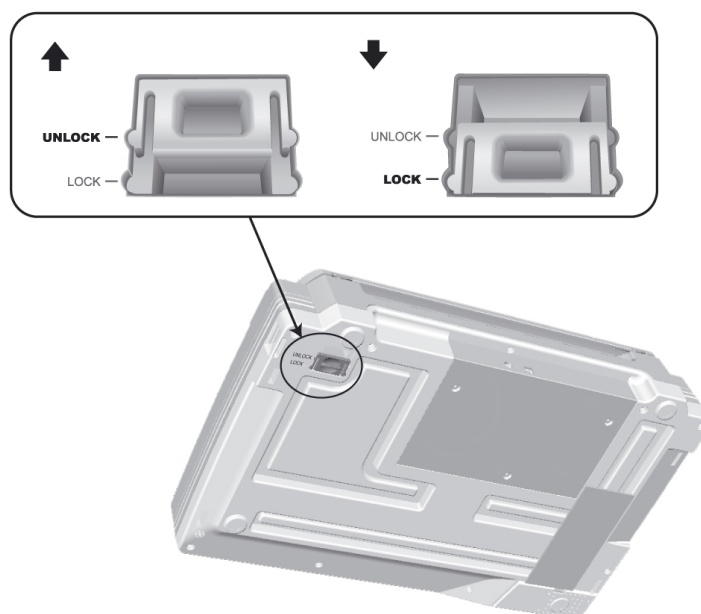
#### Choose a Proper Site First!

- Always place your scanner on a level, smooth and strong surface before proceeding the scanner setup or any scanning task. Tilted or uneven surface may cause paper-feeding errors, scanner damage or personal injury.
- Avoid using the scanner in a dusty environment. Dust particles and other foreign objects may damage the unit.

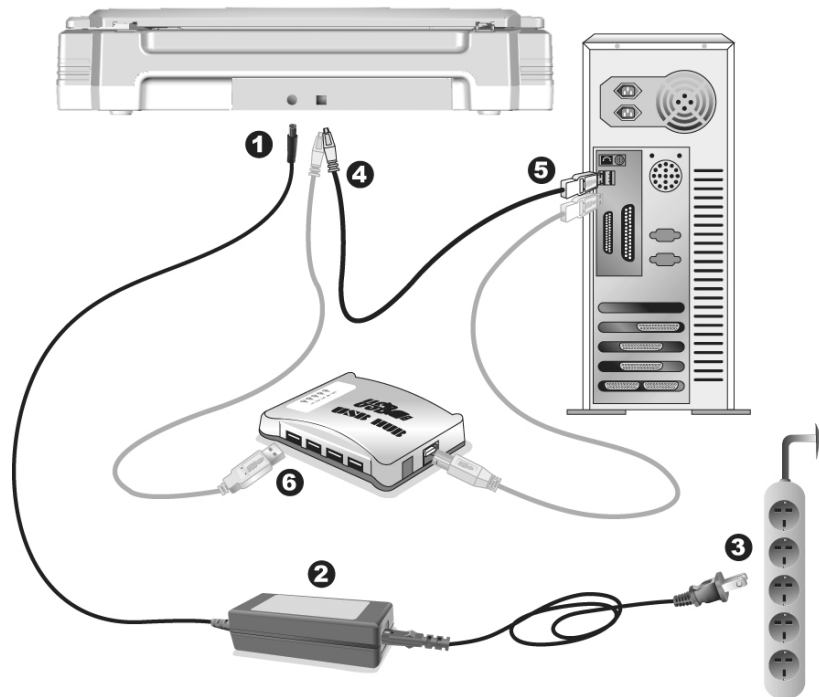
## Step 1. Unlock Your Scanner

This scanner is designed with a locking mechanism to hold the scanning head in place during transportation. Before you connect your scanner with the computer, ensure to unlock your scanner first.

To unlock the scanner, slide the locking switch on the scanner's underside toward the back panel of the scanner until it snaps into place. Refer to the "Scanner Lock" section on page 22 of this guide for more details.



## Step 2. Connecting the Scanner to Your Computer



### Attention

Please make sure the scanner is turned OFF before you plug or unplug the scanner power adapter.

1. Plug the AC adapter into the scanner's power receptor.
2. Attach the power cable to the AC adapter.
3. Plug the other end of the power cable into a standard AC power outlet.
4. Plug the square end of the included USB cable to the USB port at the rear of the scanner.
5. Plug the rectangular end of the USB cable to an available USB port on your computer.
6. If you plan to connect your scanner to a USB hub<sup>4</sup>, make sure that the hub is connected to the USB port in your computer. Next, connect the scanner to the USB hub.

## Step 3. Installing the Software

1. Switch on the scanner power from the side of the scanner.

<sup>4</sup> The USB hub is not included with the scanner.

2. If the USB components on your computer are functioning correctly, they will automatically detect the scanner causing the “Add New Hardware Wizard” or “Found New Hardware Wizard” to be launched.



**Information**


If your computer is off when the scanner is connected, the “Add New Hardware Wizard” message will not be displayed until the computer is on and Windows starts.

3. For Windows 2000:
  - a. Click the **Next** button when the “Add New Hardware Wizard” window is displayed.
  - b. Select “SEARCH FOR THE BEST DRIVER FOR YOUR DEVICE [RECOMMENDED]” and click the **Next** button.
  - c. The next window will ask you where to search to find the drive. Select **CD-ROM drive**, and deselect **Floppy disk drives** if it is checked.



- d. Insert the Setup/Application CD-ROM, included with your scanner, into your CD-ROM drive and then click the **Next** button.
  - e. Click the **Next** button in the window that appears.
  - f. During the process of the installation, a message “Digital Signature required” might be prompted. Please ignore it, and click the **Yes** button to continue the installation without any misgiving for your scanner functioning. Afterwards, please skip to Step 6.
4. For Windows XP:
  - a. Insert the Setup/Application CD-ROM, included with your scanner, into your CD-ROM drive.
  - b. Select “Install the software automatically recommended” and click the **Next** button.
  - c. Click the **Next** button in the window that appears. Afterwards, please skip to Step 6.
5. For Windows Vista:
  - a. Select “Locate and install driver software (recommended)” when the “Found New Hardware” window is displayed.
  - b. Click on the **Continue** button when the “User Account Control” dialog pops up.


- c. Insert the Setup/Application CD-ROM, included with your scanner, into your CD-ROM drive when the system prompts you “Insert the disc that came with your USB Scanner”, and click on the **Next** button.
  - d. During the process of the installation, a message “Windows can’t verify the publisher of this driver software” might be prompted. Please ignore it, and click on **Install this driver software anyway** to continue the installation without any misgiving at your scanner functioning.
6. When the system completes the installation, click the **Finish** button.
  7. Follow the on-screen instructions to install all software that your new scanner requires.
  8. After the software is installed, close all open applications and click the **Finish** button to restart your computer.

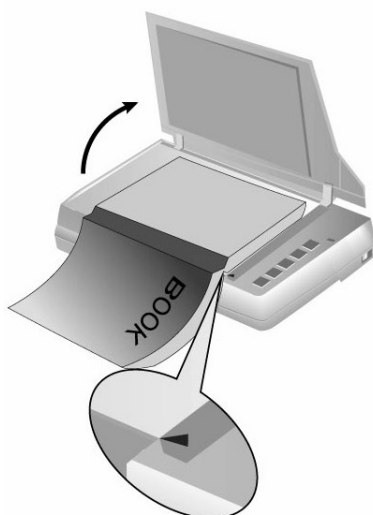
 Information	If the scanner installation is not started and displayed automatically on the screen, click <b>Start</b> and select <b>Run</b> , then type in “D:\Install” (where D: is the drive letter assigned to the CD-ROM drive of your computer.)
--	--

## Step 4. Testing the Scanner

The following describes how you can check if the scanner is properly functioning with your computer and the scanning software by performing your first scan with our bundled image-editing application NewSoft Presto! ImageFolio. Before testing your scanner, double check to make sure that all connections are securely fastened.

### To test the flatbed scanning:

1. Open the scanner’s document cover and place a book, head toward the scanner button panel, on the scanner glass. Align the book with the  mark on the scanner.



2. Gently close the document cover.
3. Click the Windows Start button to launch NewSoft Presto! ImageFolio.
4. (If you have only one scanner connected with your computer, please skip to Step 5.)  
If you have more than one scanner or other imaging device installed on your computer: Click **Select Source** from the “File” menu of Presto! ImageFolio and then choose this scanner as the default scanning source.
5. Within Presto! ImageFolio, click **File > Acquire > Acquire**.
6. In the TWAIN window that opens, select **Flatbed Reflective** as the Scan Type.
7. Click the **Scan** button.
8. If an image appears on your screen, your scanner is working properly.

## **INSTALLING ADDITIONAL SOFTWARE**

Your scanner is TWAIN compliant and functions with virtually all available TWAIN compatible software. If you purchase additional software to be used with your scanner, please make sure that it conforms to the TWAIN standard.

## CHAPTER II. SCANNING

Your scanner needs to be driven by certain type of software program. Since all documents or images (whether text or pictures) that are acquired from the scanner are treated by your computer as images, most scanning will probably be done from an image-editing program where you can view, edit, save and output the scanned images. An image-editing program has been bundled for your scanner on the included Setup/Application CD-ROM. It will allow you to alter and correct any scanned images by using a variety of filters, tools and effects.

What about scanning text documents and editing them in a word processor? This is the role of Optical Character Recognition (OCR) software. OCR software converts the image files that are created from scanning text documents into text files that can be viewed, edited and saved by word processors. An OCR program has also been bundled on the included Setup/Application CD-ROM, and if you wish to use the scanner in this way you should install the OCR software that is included.

Book Pavilion, a carefully designed tool, helps you make the book scanning experience simple and efficient. With prior settings within the Book Pavilion turning books into electronic files is as easy as making copies on a copy machine. All you need to do is turn the book pages and then press one of the three scan buttons on the scanner panel. Furthermore, you can scan consecutive pages on a book without worrying about the page direction.... And you need to experience more!


Please refer to the online help of each program to guide you through any questions you may have while scanning within that program.

This chapter describes two important steps of scanner operations. Read them thoroughly and follow the instructions to ensure correct use and optimal scanner performance.

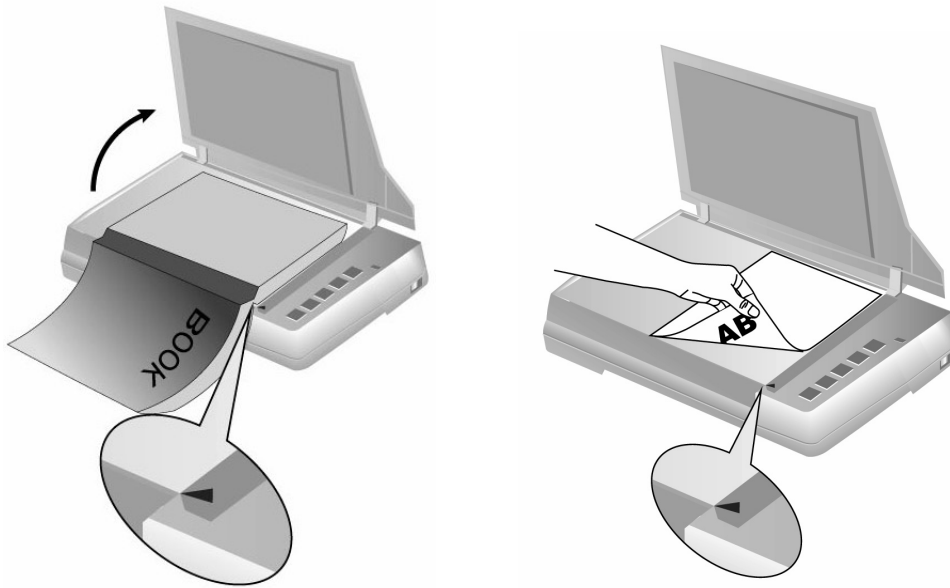
- Step 1. Placing the image(s)
- Step 2. Scanning the image(s)

### PLACING THE IMAGE(S)

#### Using the Flatbed

1. Open the scanner's document cover and place a book or document, head toward the scanner button panel, on the scanner glass. Align the book or document with the  mark on the scanner.





2. Gently close the document cover.


	<ul style="list-style-type: none"> <li>● When you're scanning a thick book, gently press the book binding to guarantee the minimum space between the to-be-scanned page and the scanner glass.</li> <li>● When the document cover is not closed, please don't look directly at the scanner lamp during scanning.</li> </ul>
<p><b>Attention</b></p>	

## SCANNING THE IMAGE(S)

There are three different ways to operate the scanner:

1. By acquiring images from the scanner through our TWAIN interface within any TWAIN-compliant application programs.
2. By scanning images within Book Pavilion software.
3. By scanning from the scan buttons on the scanner.

The TWAIN interface and Book Pavilion software are automatically installed to your system along with the scanner driver.

	<p>Before you start scanning, check the following:</p>
<p><b>Attention</b></p>	<ul style="list-style-type: none"> <li>● Your scanner has been unlocked and the power of both your computer and scanner is turned on.</li> <li>● The icon  appears on the Windows system</li> </ul>

tray.

- Book or paper is appropriately placed on the scanner flatbed glass.

## Scanning via TWAIN Interface

The TWAIN program is a very important piece of software that comes with your scanner. This program acts as an interface between the scanner hardware and the image-editing software you are using to view and edit images. The TWAIN program allows you to adjust a number of settings to define the quality of the scanned image.

The following describes how you may use our bundled image-editing application (NewSoft Presto! ImageFolio) and OCR software (I.R.I.S. Readiris Pro 10 Corporate Edition) to scan via the TWAIN interface. When you get familiar with the scanning, you may alternatively use other TWAIN compatible scanning programs or image-editing applications to do your scanning projects.

### Scan within NewSoft Presto! ImageFolio:

1. Click the Windows **Start** button to launch “Presto! ImageFolio”.

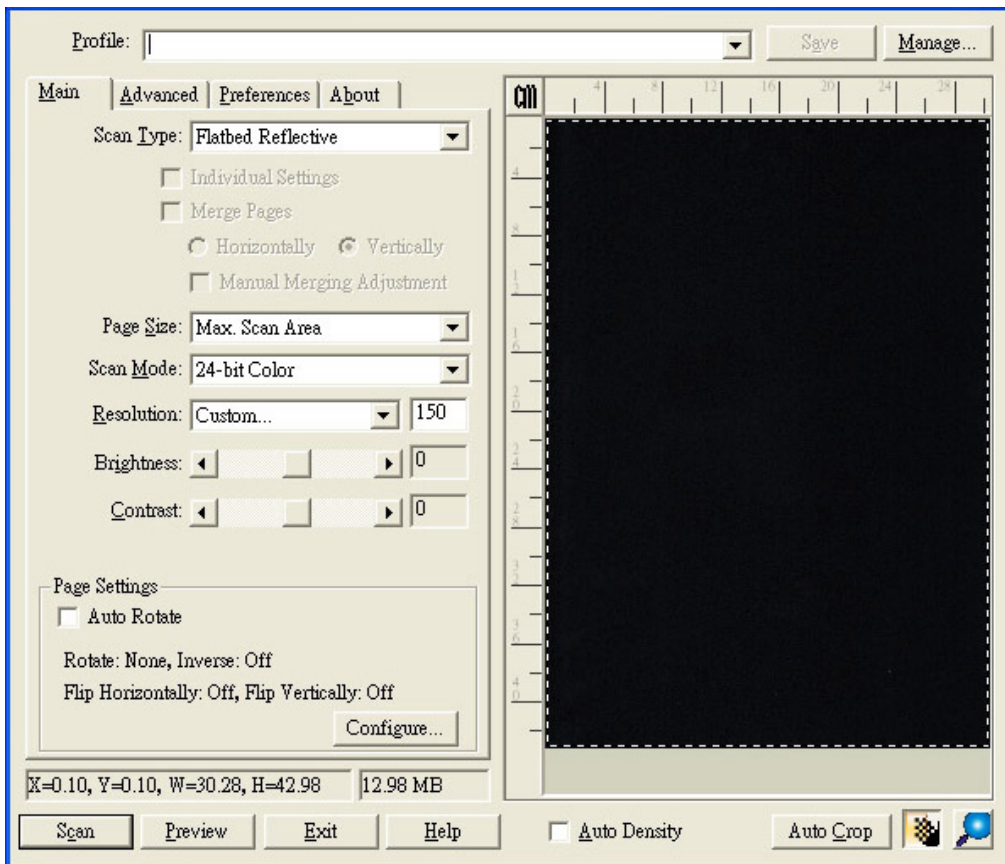


#### Attention

If you have more than one scanner or other imaging devices installed on your computer, you need to set this scanner as the default scanning source before you acquire the TWAIN program.

1. From the File menu of Presto! ImageFolio, click **Select Source**.
2. In the window that opens, choose this scanner and then click the **OK** button to set this scanner as the default scanning source.

2. Within Presto! ImageFolio, click **File > Acquire > Acquire**.
3. In the TWAIN window that opens, select **Flatbed Reflective** as the Scan Type.



4. Adjust the scanning settings.
5. Click the **Preview** button. The scanned image should appear in the “Preview Window”. To define the margins and crop out sections of the image you don’t want scanned, use the mouse to click and drag the corners or sides of the scan area borders. Adjust the scan settings again if you are not satisfied with the result.
6. Click the **Scan** button.
7. When the scan finishes, click the **Exit** button to close the “TWAIN window”. The scanned images are displayed in Presto! ImageFolio, and you may perform the image editing tasks.


### Scan within I.R.I.S. Readiris Pro 10 Corporate Edition:

1. Click the Windows **Start** button to launch Readiris Pro 10 Corporate Edition.




#### Attention

If you have more than one scanner or other imaging devices installed on your computer, you need to set this scanner as the default scanning source before you acquire the TWAIN program.

1. In Readiris Pro 10 Corporate Edition, click the  **Scanner** button located on the left side.
2. Click **Scanner Model**. In the Type window that

- opens, select “Show TWAIN User Interface” and then click the **OK** button.
3. In the next window that pops up, click the **Configure** button.
  4. In the Select Source window that opens, choose this scanner and then click the **Select** button to set this scanner as the default scanning source.
  5. Click the **OK** button to return to Readiris workspace.



2. Within Readiris Pro 10 Corporate Edition, click the  **Scan** button located on the left side.
3. In the TWAIN window that opens, select **Flatbed Reflective** as the Scan Type.
4. Adjust the scanning settings.
5. Click the **Preview** button. The scanned image should appear in the Preview Window. To define the margins and crop out sections of the image you don't want scanned, use the mouse to click and drag the corners or sides of the scan area borders. Adjust the scan settings again if the preview image is not to your liking.
6. Click the **Scan** button.
7. The scanned images are displayed in Readiris workspace, and you may proceed OCR to convert images into pdf or editable text formats.

## Scanning from the scanner's panel or via Book Pavilion Interface

Your scanner is equipped with function buttons designed to make your scanning experience more convenient and efficient. The buttons on scanner's panel perform **Book Pavilion**, **Preview**, **Color Scan**, **Grayscale Scan** and **Text Scan** functions. The settings for each button on the scanner's panel are configured through Book Pavilion. Book Pavilion offers you quick access to the most frequently-used scanning functions. They are especially useful when you need to repeatedly scan with the same settings and send images to the same destination.

### Configure Button Settings

Before performing your first scan via scanner buttons, you are recommended to configure the button settings to your needs and preferences first. There are three-ways to configure or view the button settings of Book Pavilion:

- Press **Book Pavilion** or **Preview** button from the scanner's panel.
- Double-click the icon  in the Windows system tray.
- Right-click the icon  in the Windows system tray, and then choose **Setting...** in the pop-up menu that opens.

Within the “Book Pavilion” window, you may adjust the scan settings by clicking **Mode Setting**. Also, you can configure the save settings of the scanned images.

### **Scan from the Buttons**

Scanning books or images from this scanner is very easy. Follow the two steps described below:

1. Place the book or document onto the scanner.
2. Press the **Color Scan**, **Grayscale Scan** or **Text Scan** button on the scanner panel.

The scanner starts to scan immediately and carry out the corresponding action according to the settings you have set up in the “Book Pavilion window”.

## CHAPTER III. CARE AND MAINTENANCE

Your scanner is designed to be maintenance-free. However, constant care and maintenance can keep your scanner working smoothly.

### CLEANING THE SCANNER

Paper powder, dust, ink and toner from paper being scanned may make the scanner glass dirty, which leads to poor image quality or document-feeding errors. How often to clean your scanner depends on the type of paper and number of pages being scanned.

Perform the following procedures to clean the scanner surface and scanner glass. Gently wipe locations described herein. Do not rub too hard.



#### Warning

- Before cleaning the scanner, turn off the scanner and disconnect the scanner's power cable and USB cable, and then wait a few minutes for the glass to cool to ambient temperature.
- Wash your hands with soap and water after cleaning the scanner.

### Cleaning Materials

Have the following cleaning materials ready to clean the scanner:

- soft, dry, lint-free cloth (or a cotton swab)
- non-abrasive cleaner—Isopropyl alcohol (95%). DO NOT use water.



#### Attention

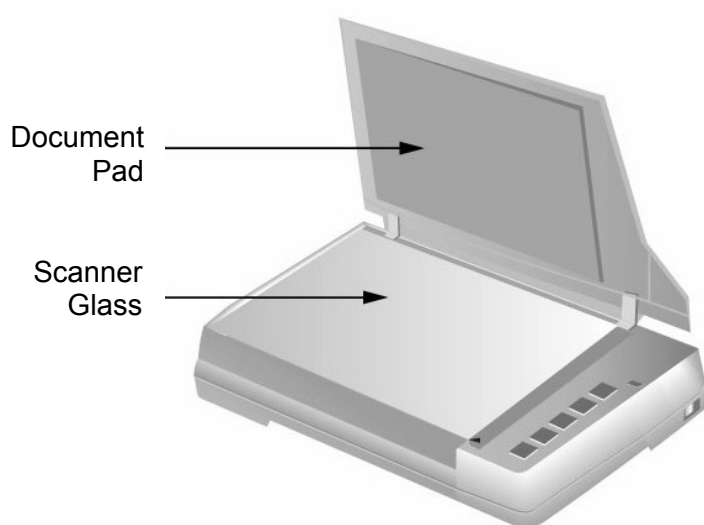
Alternatively you can use glass cleaner or neutral detergent for windows cleaning to clean the scanner glass.

Use of other cleaning materials could damage your scanner.

### Cleaning the Flatbed

1. Open the document cover.
2. Gently wipe the following areas with the cloth dampened with the cleaner.

## Clean Document Pad & Scanner Glass:




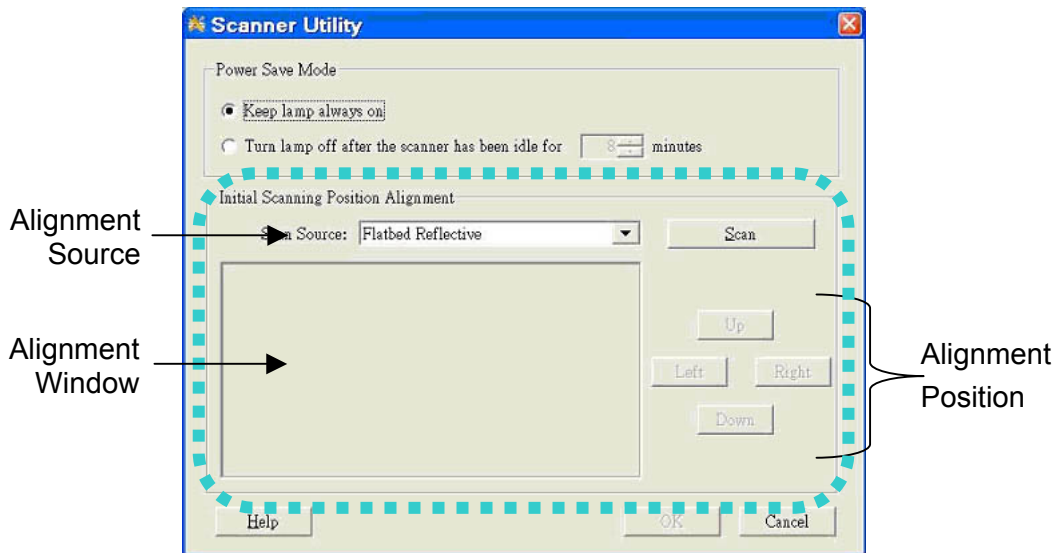
3. Wait for cleaned areas to dry completely.
4. Gently close the document cover.

## ALIGNING THE SCANNER

In most cases, the scanner doesn't need to be aligned but there are instances when the alignment might be required. You need to align the scanner only if parts of the scanned document are missing from any of its edges. For example, the heading of a document might be missing from the top edge after the document has been scanned.

### Alignment for Flatbed Scan:

1. Open the scanner's document cover and place the document, head toward the scanner button panel, on the scanner glass. Align the document with the  mark on the scanner.
2. From the Windows **START** menu, point to **Programs > Your Scanner Model Name**, and then click **Scanner Utility**.
3. The Scanner Utility window opens. Find the **Initial Scanning Position Alignment** section and select **Flatbed Reflective** as the source.

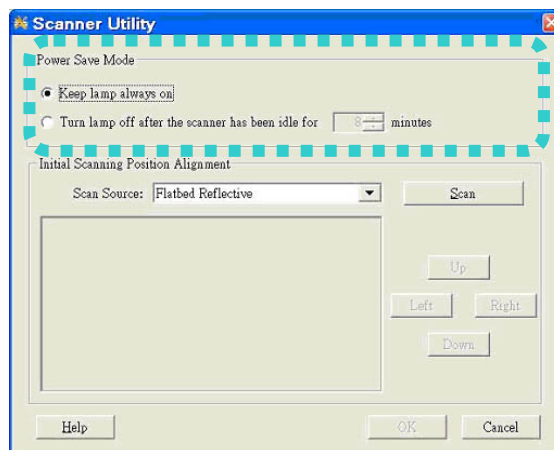


4. Click the **Scan** button. Part of the document image will be displayed in the Alignment Window.
5. Click the **Alignment Position** buttons (Up, Down, Left, Right) until the top left corner of the scanned document aligns with the top left corner of the Alignment Window.
6. When the alignment completes, click on **OK** button to save settings and exit.

## POWER SAVE


You may opt to keep the scanner lamp always on or define an idle time for the scanning lamp to automatically turn itself off.

1. From the Windows **START** menu, point to **Programs > Your Scanner Model Name**, and then click **Scanner Utility**.
2. In the “Power Save Mode” section of the “Scanner Utility window” that opens, click the button of your option:





- a. To set the lamp being always illuminated: Click the button before **Keep lamp always on**.
  - b. To automatically turn the lamp off: Click the button before **Turn lamp off after the scanner has been idle for ... minutes** and then click the up or down arrows to set a default time for the lamp to automatically turn off after a scan.
3. Click on **OK** button to save settings and exit.

 <b>Warning</b>	<ul style="list-style-type: none"><li>● To completely shut down the scanner, press the power switch on the side of the scanner.</li><li>● If the scanner will not be used for a long period of time, shut down the scanner and then disconnect the power cable from the power outlet.</li></ul>
---	---

To turn on the lamp again, simply perform any scanning task.

## SCANNER LOCK

Your scanner is designed with two different lock statuses to protect the optical parts. To ensure the scanner working properly, you have to choose an appropriate lock status according to the situation.

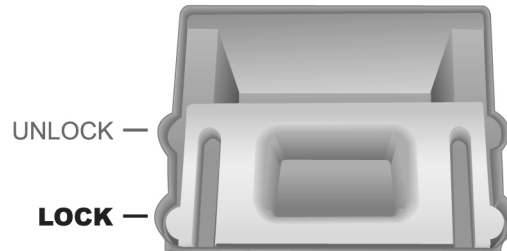
### Always Unlock:

A scanning-ready status. Furthermore, if you place your scanner on a long-term position, you can also keep your scanner lock in this status. To unlock the scanner, slide the locking switch on the scanner's underside toward the back panel of the scanner until it snaps into place.



**Always Lock:**

It holds the scanning head in place during transportation and traveling. The scanner will be kept in disabled status. To lock the scanner, slide the locking switch on the scanner's underside toward the power LED of the scanner until it snaps into place.



**Warning**


When you need to move the scanner, do lock the scanner to ensure accurate and problem-free use of your scanner.



# CHAPTER IV. TROUBLESHOOTING

If you encounter problems with your scanner, please review the installation and scanning instructions contained in this guide.

Before you ask for customer service or repair, please refer to the information in this chapter and consult our FAQ (Frequently Asked Questions) in which you can find useful self troubleshooting information. From the Windows **START** menu, point to **Programs > Your Scanner Model Name**, and then click **FAQ**.

## SCANNER CONNECTION

The first step to take when troubleshooting connection problems with your scanner is to check all physical connections. The icon , located on the Windows system tray, indicates if the scanner software is properly launched and the scanner and computer are communicating with each other.

Appearance	Status
	The program has been successfully launched and the scanner is connected with the computer, ready to scan mages.
	The scanner is not connected with the computer. Or, the scanner power is not switched on.
No Display	You have chosen to terminate the program, no matter the scanner is connected or disconnected with the computer.

# APPENDIX A: SPECIFICATIONS<sup>5</sup>

<b>Plustek OpticBook A300</b>	
Resolution	Optical Resolution: 600 dpi Max. Hardware Resolution: 600 x 1200 dpi
Scan Modes	Color: Input 48-bit; Output 24-bit Grayscale: Input 16-bit; Output 8-bit Black & White: 1-bit
Lamp Type	Cold Cathode Fluorescent Lamp
Scan Area (W x L)	Maximum 304.8 x 431.8 mm (12" x 17") Minimum 12.7 x 12.7 mm (0.5" x 0.5")
Scan Speed (300dpi, A3 size)	Color: 2.48 sec Grayscale: 2.10 sec Black & White: 2.10 sec
Acceptable Paper Sizes (W x L)	Up to 304.8 x 431.8 mm (12" x 17")
Power Adapter	Input voltage/frequency: 100Vac – 240Vac (-10 % to +10 %) 47 to 63 Hz Output voltage/watt: 24Vdc, 1.67A
Power Consumption	Operation: < 36 W Idle: 8 watts
Interface	USB 2.0 High Speed
Operating Temperature	5°C to 35°C (41°F to 95°F)
Relative Humidity	20% to 80% (non-condensing)
Physical Dimensions (WxDxH)	623 x 400 x 133 mm (24.53" x 15.75" x 5.24")
Weight	7.7 Kgs (16.96 Lbs)
Protocols	TWAIN Compliant
EMC	FCC Class A, CE

<sup>5</sup> Hardware specifications may change at any time without prior notice.

# APPENDIX B:

## CUSTOMER SERVICE AND WARRANTY

For further assistance, visit our website or call our customer support phone number listed on the last page of this guide. One of our representatives will be happy to assist you from Monday through Friday during office working hours.

To avoid delays, please have the following information available before calling:

- Scanner name and model number
- Scanner serial number (located at the bottom of the scanner)
- Scanner CD version and part number
- A detailed description of the problem
- Your computer manufacturer and its model number
- The speed of your CPU
- Your current operating system and BIOS (optional)
- Name of software package(s), version or release number and manufacturer of the software
- Other USB devices installed

### STATEMENT OF LIMITED WARRANTY

This Statement of Limited Warranty applies only to the options you originally purchase for your use, and not for resale, from an authorized reseller.

The manufacturer warranty includes all parts and labor, and is not valid without the receipt of original purchase. To obtain warranty service, you may contact the authorized dealer or distributor, or visit our website to check out the available service information, or send a request via E-mail for further help.

If you transfer this product to another user, warranty service is available to that user for the remainder of the warranty period. You should give your proof of purchase and this statement to that user.

We warrant that this machine will be in good working order and will conform to its functional descriptions in the documentation provided. Upon provision of proof of purchase, replacement parts assume the remaining warranty of the parts they replace.

Before presenting this product for warranty service, you must remove all programs, data and removable storage media. Products returned without guides and software will be replaced without guides and software.

This Limited Warranty service does not provide for carry-in exchange when the problem results from accident, disaster, vandalism, misuse, abuse, unsuitable environment, program modification, another machine or non-vendor modification for this product.

If this product is an optional feature, this Limited Warranty applies only when the feature is used in a machine for which it was designed.

If you have any questions about your Limited Warranty, contact the approved retailer from whom you bought the product or the manufacturer.

THIS LIMITED WARRANTY REPLACES ALL OTHER WARRANTIES, EXPRESS OR IMPLIED, INCLUDING, BUT NOT LIMITED TO, THE IMPLIED WARRANTIES OF MERCHANTABILITY AND FITNESS FOR A PARTICULAR PURPOSE. HOWEVER, SOME LAWS DO NOT ALLOW THE EXCLUSION OF IMPLIED WARRANTIES. IF THESE LAWS APPLY, THEN ALL EXPRESS AND IMPLIED WARRANTIES ARE LIMITED IN DURATION TO THE WARRANTY PERIOD. NO OTHER WARRANTIES APPLY AFTER THAT PERIOD.

Some jurisdictions do not allow limitations on how long an implied warranty lasts, so the above limitation may not apply.

Under no circumstances are we liable for any of the following:

1. Third party claims against you for losses or damages.
2. Loss of, or damage to, your records or data; or
3. Economic consequential damages (including lost profits or savings) or incidental damages, even if we are informed of their possibility.

Some jurisdictions do not allow the exclusion or limitations of incidental or consequential damages, so the above limitation or exclusion may not apply to you.

This Limited Warranty gives you specific legal rights, and you may also have other rights that vary from jurisdiction to jurisdiction.

## **FCC RADIO FREQUENCY STATEMENT**

This is a Class A product. In a domestic environment this product may cause radio interference in which case the user may be required to take adequate measures.

This equipment generates, uses and can radiate radio frequency energy and, if not installed and used in accordance with the instructions, may cause harmful interference to radio communications. However, there is no guarantee that interference will not occur in a particular television reception (which can be determined by turning the equipment off and on), the user is encouraged to try to correct the interference by one or more of the following measures:

- Reorient or relocate the receiving antenna.
- Increase the separation between the equipment and receiver.
- Connect the equipment to an outlet on a circuit different from that which the receiver is connected.

- Shielded interconnect cables and shielded power cord which are supplied with this equipment must be employed with this equipment to ensure compliance with the pertinent RF emission limits governing this device.
- Consult the dealer or an experienced radio/TV technician for help if the conditions persist.
- Changes or modifications not expressly approved by the manufacturer or authorized service center could void the user's authority to operate this equipment.

This device complies with Part 15 of the FCC Rules. Operation is subject to the following two conditions: (1) this device may not cause harmful interference, and (2) this device must accept any interference received, including interference that may cause undesired operation.

# CONTACTING PLUSTEK

**Europe:** Plustek Technology GmbH  
Gutenbergring 38  
22848 Norderstedt  
Germany

Tel.: +49 (0) 40 523 03 130  
Fax: +49 (0) 40 523 03 500  
E-mail: [support@plustek.de](mailto:support@plustek.de)  
Website: [www.plustek.de](http://www.plustek.de)

**North America:** Plustek Technology Inc.  
17517 Fabrica Way, Suite B  
Cerritos, CA 90703  
U.S.A.

Tel: +1 -714-670-7713  
Fax: +1 -714-670-7756  
E-mail: [supportusa@plustek.com](mailto:supportusa@plustek.com)

**Worldwide except  
Europe & North America:** Plustek Inc.  
13F-1, No.3 (Building F), Yuan Qu Street  
115 Nankang, Taipei  
Taiwan

Tel: +886-2-2655 7866  
Fax: +886-2-2655 7833  
Website: [www.plustek.com](http://www.plustek.com)

**Visit our website**

<http://www.plustek.com/support/support.htm>

**for more customer service information.**